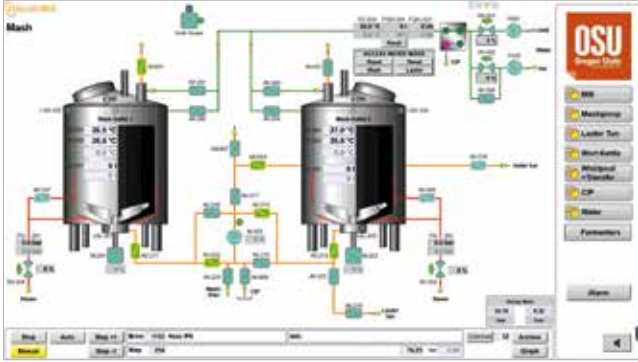


WinBrew[®] Automation System



Reliable automation software is essential for controlling, monitoring and logging complex operations - not only for beverage systems. Esau & Hueber has therefore included the trusted WinBrew® in its portfolio for many years. It allows the user to control the entire operating sequence, from malt handling to the bright beer tank, with a single platform.



Visualization with graphic representation of the process flow

WinBrew® control systems are freely programmable and are delivered complete with all necessary modules, e. g. remote maintenance. Logging of operating data is optionally available.

The high-resolution visualization system displays the complete production process at a plant. The function of regulators, counters and loggers is displayed on the monitors instead of using conventional hardware controllers. The system is based on a Siemens SIMATIC S7 or Allen-Bradley ControlLogix controller that checks the plausibility (locked manual level) of manual intervention, which might be necessary from time to time. This virtually prevents damage to the product and the machine caused by operating errors.

Esau & Hueber offers the WinBrew®-S for defined projects or partial automation. The user interface and the control components are adapted to the budget, the individual needs and the task at hand without restricting the availability or reliability of the plant.

Your Advantages

- Process step editor based on a data base with graphic operation for a multitude of steps, types and recipes; with full access to all variables, valves and drives
- High-resolution visualization system with graphic representation of the process flow as well as controllers, counters and a plotter function
- FUZZY-LOGIC for the optimization of lauter and yeast management processes
- Production and consumption data acquisition incl. batch traceability
- Performs plausibility checks during manual operation to avoid damage to the product and the machine
- Long-time archive due to offline function
- High compatibility with DCS, MES and PLC systems
- Worldwide remote-maintenance by our programmers and brewery engineers



5-vessel brewhouse 70 hl PREMIUM LINE

WinBrew® Process Control

with optional additional modules:


- **WinBrew® Lauter Control**
- **WinBrew® Maintenance**
- **WinBrew® Yeast Control**
- **WinBrew® Messenger**

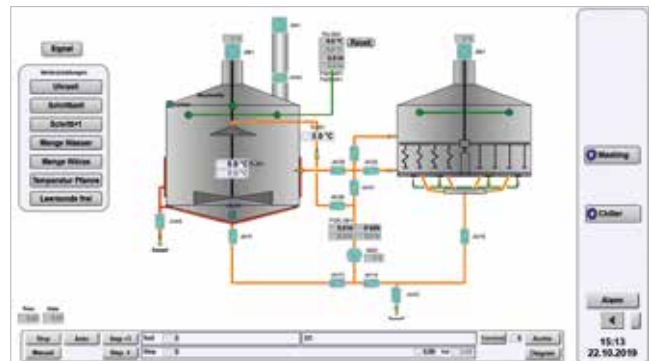
The WinBrew® CRAFT automation concept for the CRAFT LINE brewhouses consists of a solution adapted for the operator to the particular customer situation.

Depending on the desired degree of automation, the customer can choose one of the three automation levels described below.

The system can be upgraded - also retrospectively - from a lower automation level to a higher automation level with little effort (installation and commissioning).

It should be noted here that, depending on the automation level, additional controls and instruments and MSR equipment may also be required.

Automation Concept – WinBrew® CRAFT 	Level 1	Level 2	Level 3	
Touch Panel PC Windows 10 IoT 15"	✓	✓	✓	Hardware
Powerful visualization software ZenOn Operator	✓	✓	✓	
All valves can be opened and closed via the HMI	✓	✓	✓	Functions
All agitator drives can be started, stopped and controlled via the HMI	✓	✓	✓	
The pump can be started, stopped and controlled via the HMI	✓	✓	✓	
Display of the mixed water temperature on the HMI	✓	✓	✓	
Display of the mash and wort temperature with control of the steam valve	✓	✓	✓	
Control for external mill and transport to the grist hydrator	✓	✓	✓	
Control for hot water booster pump	✓	✓	✓	
Water meter with valve closing function		✓	✓	
Automated mashing-in		✓	✓	
Automatic infusion mash program		✓	✓	
Basic lauter program		✓	✓	
Control of 2 control valves for regulated water temperature		✓	✓	
Fully automated mashing			✓	
Fully automated lautering			✓	
Fully automated wort boiling			✓	
Remote Maintenance & Service – Support through Esau & Hueber	✓	✓	✓	



CRAFT LINE Brewhouse, CRAFT¹⁰, CRAFT²⁰ 10 bbl/11,8 hl and 20 bbl/23,5 hl



Esau & Hueber GmbH
Kapellenweg 10
86529 Schrobenhausen
Tel.: +49 8252 8985-0
Fax: +49 8252 8985-85
info@esau-hueber.de
www.esau-hueber.de



www.esau-hueber.de



PART OF THE SCHULZ BRAND FAMILY:



hinke



ESAU&HUEBER